

TEMPLE DAILY TELEGRAM

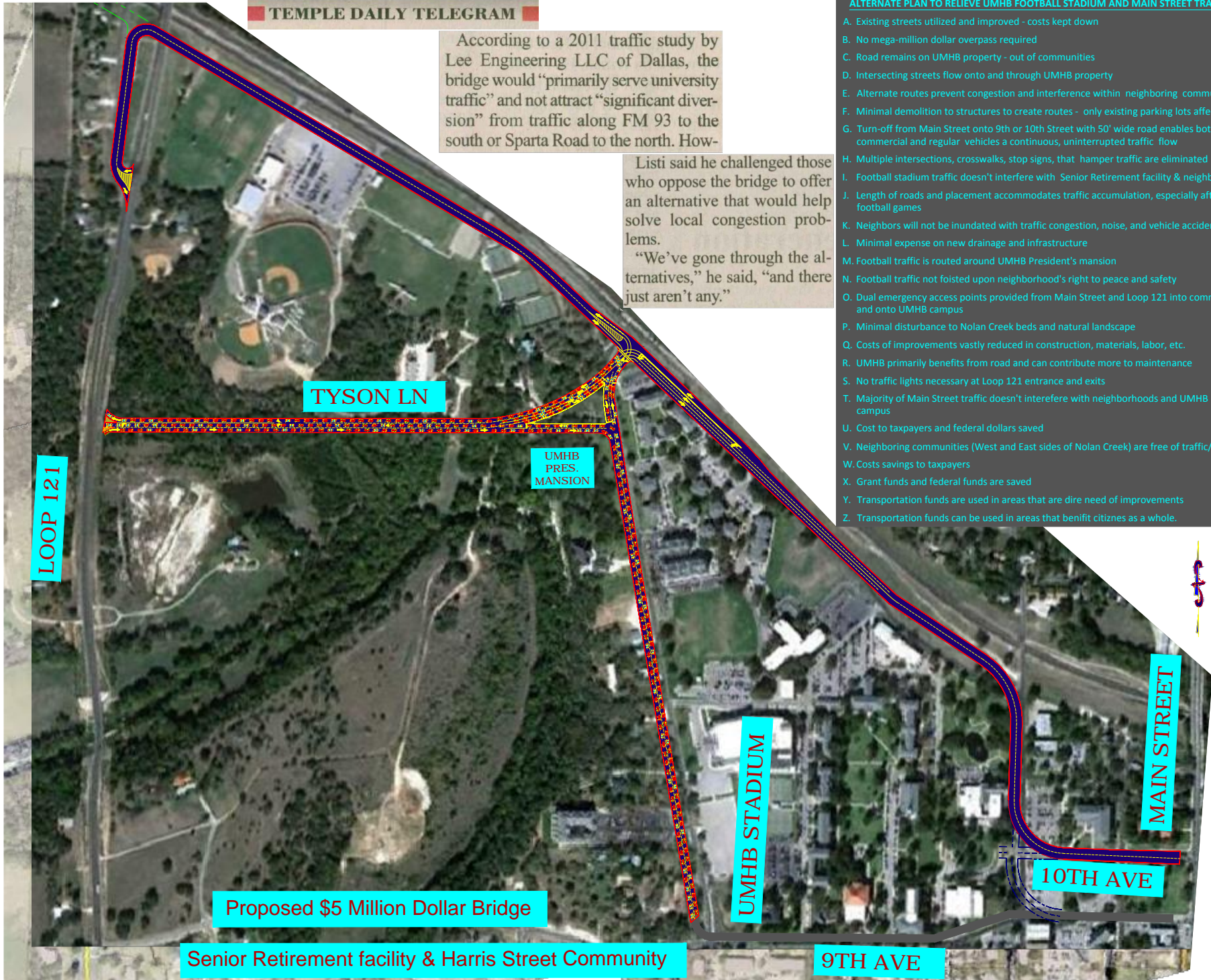
According to a 2011 traffic study by Lee Engineering LLC of Dallas, the bridge would "primarily serve university traffic" and not attract "significant diversion" from traffic along FM 93 to the south or Sparta Road to the north. How-

Listi said he challenged those who oppose the bridge to offer an alternative that would help solve local congestion problems.

"We've gone through the alternatives," he said, "and there just aren't any."

ALTERNATE PLAN TO RELIEVE UMHB FOOTBALL STADIUM AND MAIN STREET TRAFFIC

- A. Existing streets utilized and improved - costs kept down
- B. No mega-million dollar overpass required
- C. Road remains on UMHB property - out of communities
- D. Intersecting streets flow onto and through UMHB property
- E. Alternate routes prevent congestion and interference within neighboring communities
- F. Minimal demolition to structures to create routes - only existing parking lots affected
- G. Turn-off from Main Street onto 9th or 10th Street with 50' wide road enables both commercial and regular vehicles a continuous, uninterrupted traffic flow
- H. Multiple intersections, crosswalks, stop signs, that hamper traffic are eliminated
- I. Football stadium traffic doesn't interfere with Senior Retirement facility & neighbors
- J. Length of roads and placement accommodates traffic accumulation, especially after football games
- K. Neighbors will not be inundated with traffic congestion, noise, and vehicle accidents
- L. Minimal expense on new drainage and infrastructure
- M. Football traffic is routed around UMHB President's mansion
- N. Football traffic not foisted upon neighborhood's right to peace and safety
- O. Dual emergency access points provided from Main Street and Loop 121 into community and onto UMHB campus
- P. Minimal disturbance to Nolan Creek beds and natural landscape
- Q. Costs of improvements vastly reduced in construction, materials, labor, etc.
- R. UMHB primarily benefits from road and can contribute more to maintenance
- S. No traffic lights necessary at Loop 121 entrance and exits
- T. Majority of Main Street traffic doesn't interfere with neighborhoods and UMHB campus
- U. Cost to taxpayers and federal dollars saved
- V. Neighboring communities (West and East sides of Nolan Creek) are free of traffic/noise
- W. Costs savings to taxpayers
- X. Grant funds and federal funds are saved
- Y. Transportation funds are used in areas that are dire need of improvements
- Z. Transportation funds can be used in areas that benefit citizens as a whole.



Proposed \$5 Million Dollar Bridge

Senior Retirement facility & Harris Street Community

9TH AVE

UMHB STADIUM

UMHB PRES. MANSION

TYSON LN

MAIN STREET

10TH AVE

LOOP 121